



Help for Your Child Care Business during COVID-19

**To hear, use your computer audio
or phone: (646) 876-9923**

We will begin promptly at 1:00pm

Hello! And a few Logistics

Everyone is muted so we can all hear well.

We are recording this call.


This PowerPoint, the recording, and the chat will be posted at:

nh.childcareaware.org



Hello! And a few Logistics

To share your questions, ideas and solutions:

- If you are on a computer, use the Zoom Chat 
- If you are participating by phone, send an email to **info@earlylearningnh.org**



Help for Your Child Care Business during COVID-19

Thursday, March 26, 2020
1:00pm to 2:00pm

Agenda

- 1. Welcome and Purpose of the Call**
- 2. NH Community Development Finance Authority**
- 3. NH Department of Business and Economic Affairs**
- 4. NH Department of Employment Security**
- 5. State Early Learning Alliance (SELA)**
- 6. Next Steps**



Welcome and Purpose of the Call



Today's Speakers (in order) are:



Jackie Cowell
Early Learning NH



Katherine Easterly Martey
NHCDFA



Comm. Taylor Caswell
NHDBEA



Dep. Comm. Richard Lavers
NHES



Stefany Shaheen



Howard Brodsky

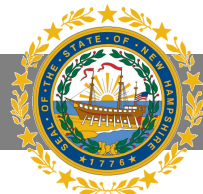


Lou Gargiulo



Julie McConnell

SELA Shared Services Emergency Response & Recovery Team





COMMUNITY DEVELOPMENT FINANCE AUTHORITY

SUPPORTING THE CREATION OF STRONG,
RESILIENT AND VIBRANT COMMUNITIES



MISSION

Maximizing the value and impact of community development, economic development and clean energy initiatives throughout New Hampshire.



VISION

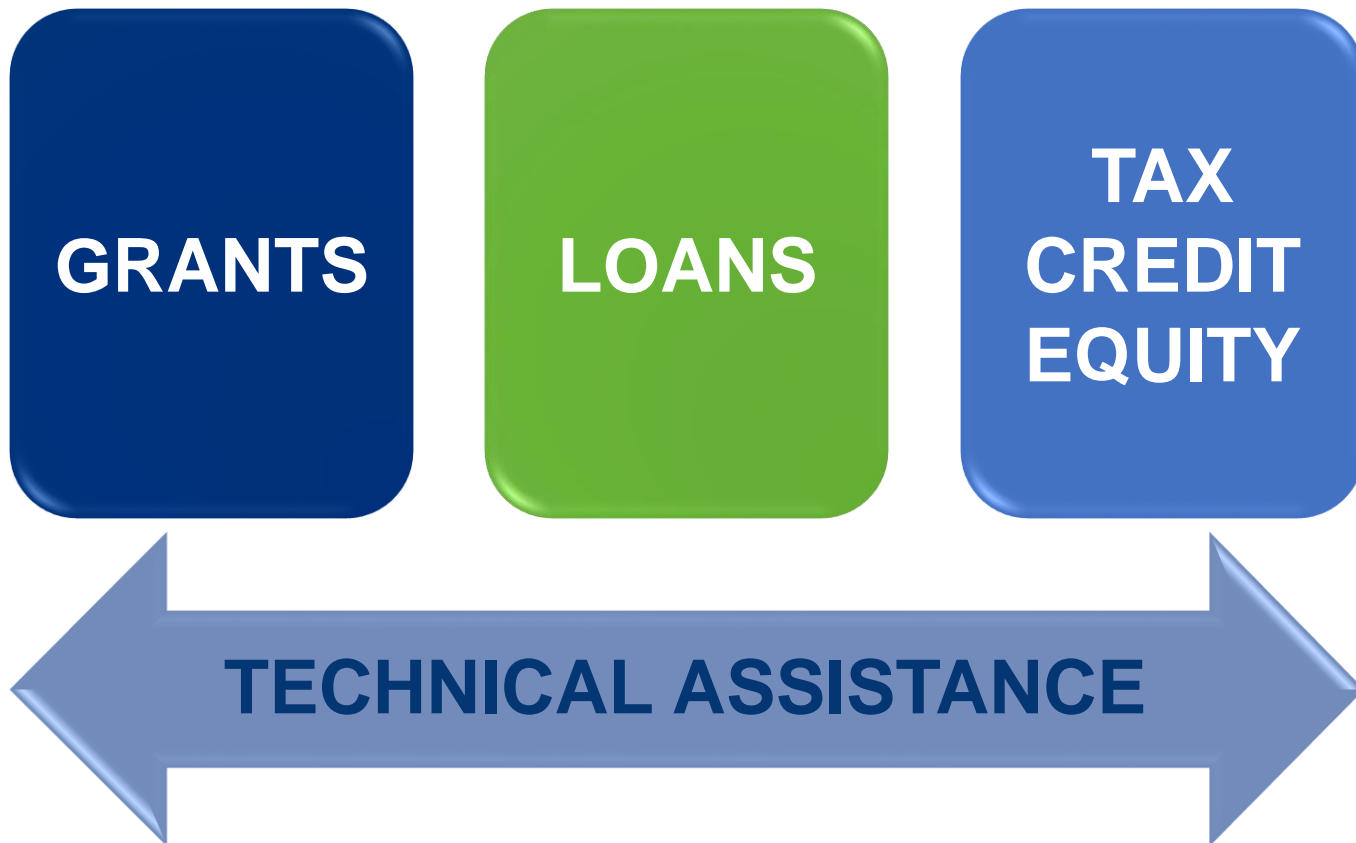
We see a future New Hampshire whose communities are economically and socially resilient, reflect and respect their natural surroundings, and are places where people want to live, work and play.



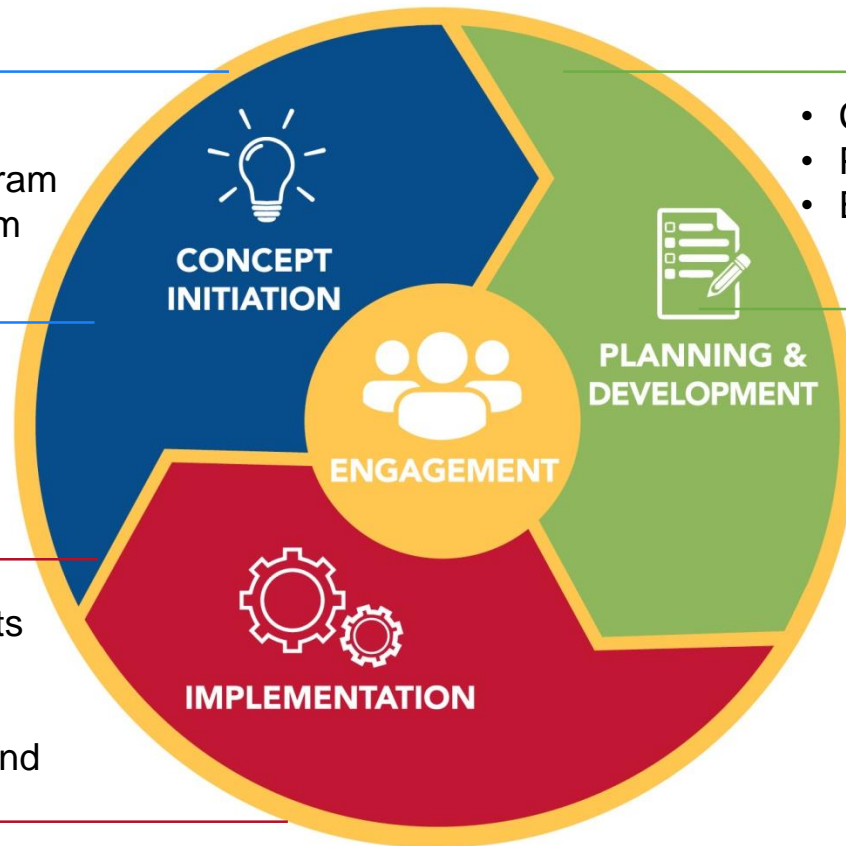
VALUES

Integrity
Collaboration
Adaptability
Respect
Focus
Prosperity

RESOURCES



CDFA's ECOSYSTEM



- Pre-Application Support
- Ideas 2 Innovation (i2i) Program
- L5 Capacity Building Program

- CDBG Planning Grants
- Predevelopment Loan Program
- Energy Audit Program

- Community Dev. Block Grants
- Tax Credits
- Clean Energy Fund
- Community Development Fund

- ENGAGEMENT**
- Network Building
 - Asset Management
 - Data & Outcome Analysis
 - Ongoing Technical Assistance



CDFA

COMMUNITY DEVELOPMENT FINANCE AUTHORITY

SFY 2019 IMPACTS

\$16 million infused into New Hampshire communities

80 projects supported **189** business donors engaged

Projects supported by CDFA reported the following impacts:

- Assisted **198,390** people
- Rehabbed, preserved or created **242** housing units
- Created or retained **267** jobs
- Supported **262** micro businesses
- Developed or rehabbed **211,871** square feet
- Estimated annual energy savings of **626,508** kW hours
- Saved an estimated **\$78,524** in annual energy costs



Tax Credit Program



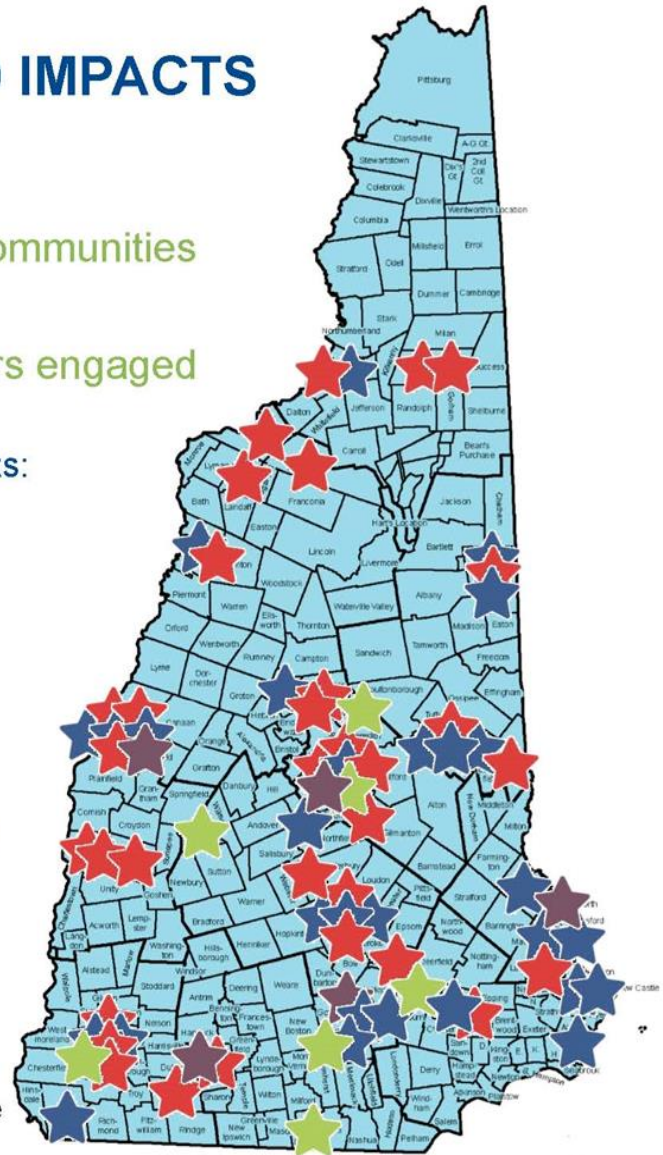
Clean Energy Fund



Community Development Block Grant



Recovery Friendly Workplace



CREATING NEW OPPORTUNITIES



REDUCING ENERGY COSTS



LEARN MORE



SCHEDULE A MEETING

APPLY / GRANTS MANAGEMENT

MAKE A PLEDGE

RESOURCE WEBSITE

HOME

WHO WE ARE



HOW WE HELP



INVESTING IN NH COMMUNITIES



COVID-19 RESOURCES

\$16 million infused into New Hampshire communities

80 projects supported

189 business donors engaged.

OUR IMPACT





THANK YOU!

Community Development Finance Authority
www.nhcdfa.org

603-226-2170

COVID-19 NH Business Resources

16

NH Department of Business and
Economic Affairs

BEA stands ready to provide assistance to businesses affected by COVID-19 through custom and personal input from our Business Resource Specialists.

nheconomy.com/covid19

- Contact info for your regional Business Resource Specialist
- Information on SBA Disaster Assistance and other state and federal loans, grants, supports, and more



Layoffs and business closures: If your business faces a potential layoff, the State of New Hampshire offers services through its Rapid Response program. Rapid Response is a comprehensive, collaborative and immediate initiative to respond to and mitigate layoffs and closures. Rapid Response benefits both employers and employees through services to workers who are laid off, as well as layoff aversion information for businesses.

Employers facing potential layoffs or closures should contact Joe Doiron at Joseph.Doiron@livefree.nh.gov, 603-271-0146, to activate a Rapid Response team. More information can be found at nhworks.org.



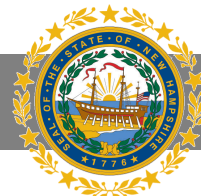
Employees experiencing layoffs: The State of New Hampshire offers a number of services for employees who have been laid off. New Hampshire Employment Security, [nhes.nh.gov](https://www.nhes.nh.gov), has a list of available services. Individuals will need to file for unemployment each week of temporary unemployment and this can and should be done online or by calling 603-271-7700.

[Guidance for Non-Profit and Public Employers](#)

[Guidance for Private Employers](#)

[Guidance for Excluded Services Now Eligible](#)

[Guidance for Self Employed and Previously Excluded Employment](#)



SELA SHARED SERVICES EMERGENCY RESPONSE & RECOVERY TEAM

To take the burden off child care programs, Early Learning NH will deploy its shared service approach - an economy of scale model that benefits child care programs, staff and families - to coordinate cleaning, needed supplies and its direct \$ cost savings.

The partners in the shared services approach are:

- Howard Brodsky, CCA Global Partners
- Lou Gargiulo, Great North Property Management



State Early
Learning Alliance
of New Hampshire
Better. Together. For Children.

Email info@earlylearningnh.org or call 226-7600



EMERGENCY RESPONSE

Stand up new services and supplies needed for child care programs to operate

- Secure storage and distribution of needed extra supplies during COVID-19, such as bleach, thermometers, other identified supplies, etc.
- Identify and match available cleaning supplies from closed entities, including colleges, restaurants, etc., directly to a child care program
- Identify and match cleaning companies normally serving these restaurants, colleges, etc., who may large companies, etc.
- Provide TA and support to help negotiate needed lease or mortgage relief
- Provide TA and support on accessing \$ from state, federal and community aid
- Open up the SELA web platform to all licensed child care programs

RECOVERY

ASAP, leverage the current shared services benefits to realize savings to child care programs' operating budgets, to their workforce and to the families they serve



Your Questions, Your Ideas and Your Solutions

